

Using the Tektronix printer driver for Windows

System requirements

The Tektronix Windows printer driver requires the following hardware and software:

- An IBM or compatible PC, with a 386, or higher, processor.
- One floppy-disk drive (3.5-inch drive with 1.44-Mbyte capacity).
- A hard disk.
- Two Mbytes of memory.
- MS-DOS 5.0 operating system, or higher.
- Windows version 3.1.
- Optional: CD-ROM drive.

Accessing on-line help

On-line help is available in two ways:

- For general Windows 3.1 information about printers and setting options, select **Help** from the **Control Panel** menu bar and choose a topic from the **Help** menu. A **Help** window appears, offering information on the selected topic and listing other related topics.
- The Tektronix driver uses the Microsoft help file *PSCRIPT.HLP*. This file comes with the Microsoft PostScript driver and must be installed before you can use **Help**. After installing this file, you can get information about the Tektronix driver by choosing **Help** in the **Setup** dialog box. (Access this dialog box through the **Printers** dialog box.)

Installing the driver

The Tektronix Windows driver is a Windows PostScript driver customized for Tektronix printers. These instructions assume a basic familiarity with Windows operation and terminology. For additional information about Windows, refer to your Microsoft Windows documentation.

1. CD-ROM:

- Insert the Phaser 480X CD-ROM into your computer's CD-ROM drive.

Floppy diskette:

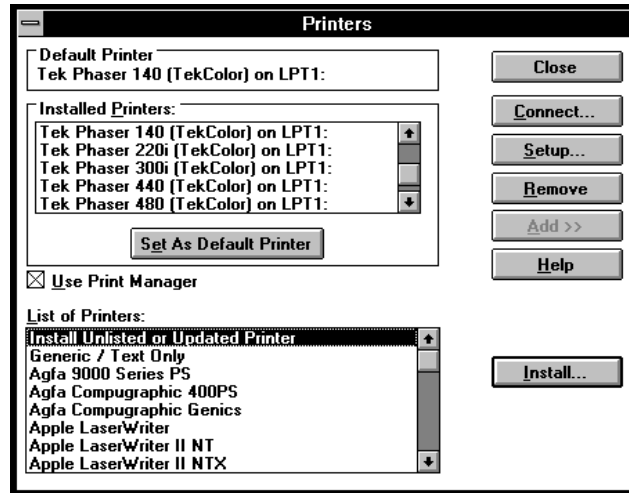
- Insert the Tektronix Windows 3.1 Driver and Printer Utilities diskette into your computer's disk drive, for example, drive **B:**.

2. Start **Windows**.

3. Open the **Control Panel**. Double-click on the **Printers** icon; the **Printers** dialog box appears.

4. Click the **Add>>** button.

5. In the **List of Printers**, select **Install Unlisted or Updated Printer**.

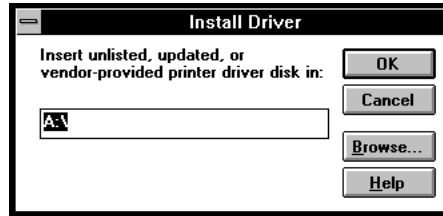


6. Click **Install**.
7. CD-ROM:
 - a. Type in the drive containing the Phaser 480X CD-ROM.
 - b. Open the `\DRIVERS` directory.
 - c. Click **OK**.

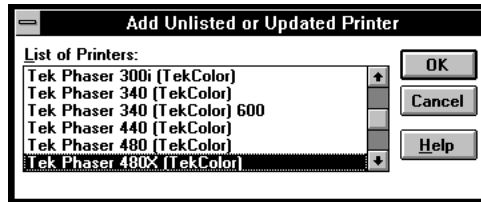
Floppy diskette:

- a. Type in the drive containing the Phaser 480X diskette, for example drive **B**.

b. Click OK.



8. Select **Tektronix Phaser 480X (TekColor)** in the list and click OK. The driver software you need is automatically installed.



9. Continue with configuring the driver.